

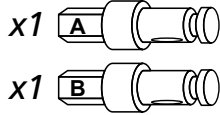
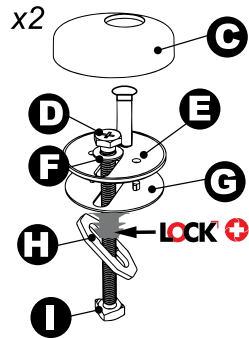


### BEFORE INSTALLING YOUR WIRQUIN TOILET SEAT

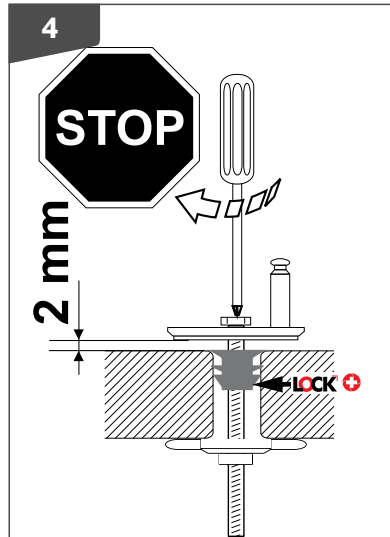
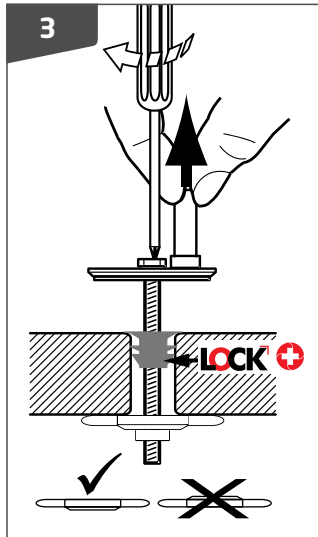
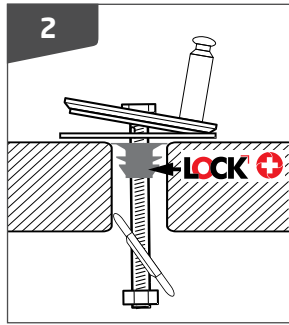
- Verify the colour and size.
- Check that the visual surface is free from cracks and surface defects.
- Ensure that all components are present and in a satisfactory condition.
- No claims will be entertained after installation.



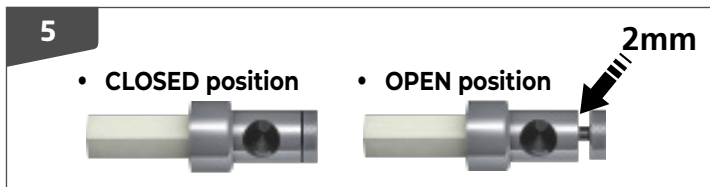
**LOCK+** ONLY SUPPLIED WITH SELECTED COMPATIBLE SEATS. Ignore this step if not included.



### A : INSTALLATION OF FIXATION TO PAN



### B : INSTALLATION OF SOFT CLOSE CARTRIDGES

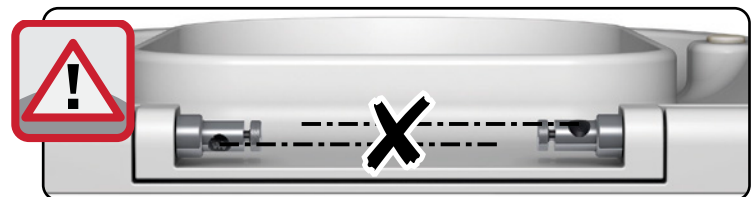


- Ensure the seat and lid are clean from any debris.
- Unscrew the fastener on the cartridges by hand with minimum force to a maximum of **2mm** to **OPEN** position.

**DO NOT** unscrew the fastener with the allen key.  
**DO NOT** force fastener beyond mechanical stop.  
**DO NOT** attempt to unscrew the fastener completely.  
**THE ABOVE WILL CAUSE IRREPAIRABLE DAMAGE TO THE SCREW THREAD AND RENDER THE HINGES USELESS!**



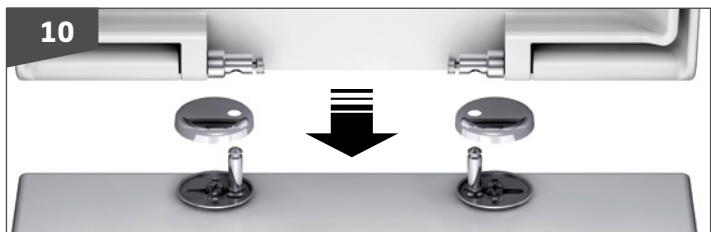
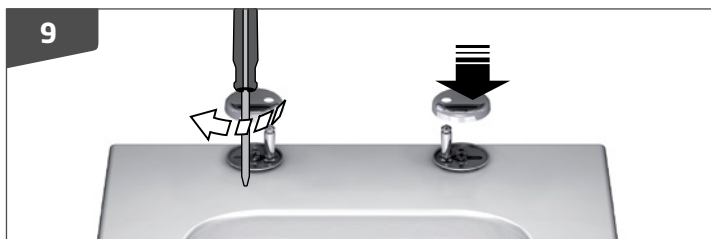
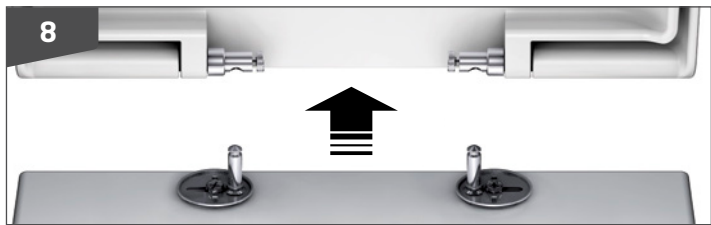
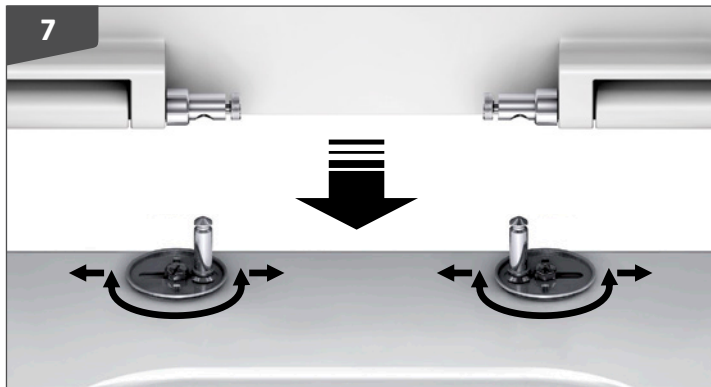
- Align cartridges and insert into seat.
- **A** - Controls speed of **LID**. **B** - Controls speed of **SEAT**



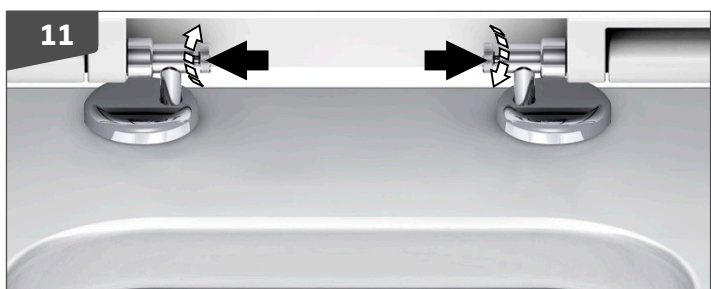


### B : INSTALLATION OF SOFT CLOSE CARTRIDGES

- Place seat onto fixation to align before placing covers over.
- Align seat in position and remove seat to tighten fixation with a screwdriver.

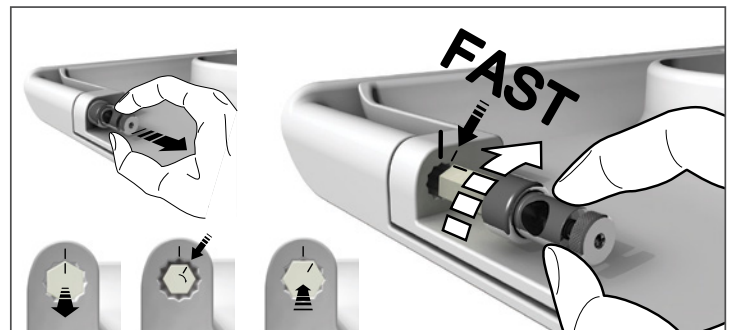
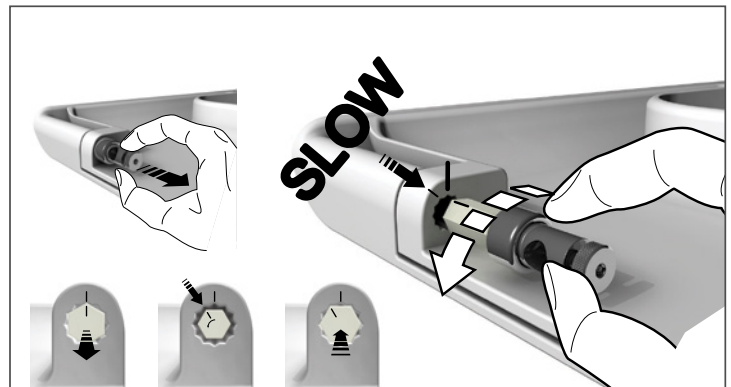


- Once fixation is tight, place covers over.
- Place seat onto fixation.
- Tighten fastener with alan key supplied.



### C : ADJUSTING THE SPEED OF SOFT CLOSE

- Adjust speed of seat and lid independantly as shown below.



SCAN THE QR TO VIEW THE HINGE ON OUR WEBSITE WITH DETAILED VIDEO'S ON SETTING THE HINGES



### CARE AND CLEANING INSTRUCTIONS

- The seat and cover should be cleaned using warm soapy water.
- Do NOT use aggressive or abrasive cleaners as this may scratch the surface.
- The hinges should be cleaned using soap or mild detergent.
- After cleaning, the hinges should be rinsed in clean water and dried.
- NEVER use bleach, concentrated cleaners or acids as this will cause discolouring and pitting.
- Do not leave bleach in the toilet bowl with the cover closed because it may cause discolouration of the seat and hinges.
- The cover of the toilet seat is for decorative purposes only. The lid is not guaranteed to carry weight.  
**(Do NOT stand or sit on the cover.)**

