



HINGE FITTING INSTRUCTIONS FOR NEON / NEON LITE TOILET SEAT

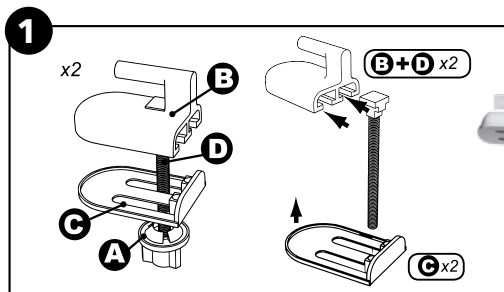
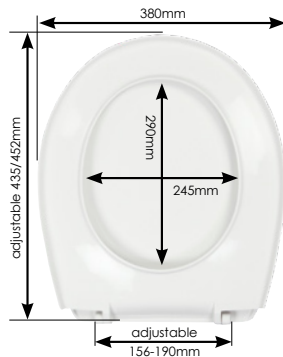
270693_03
01/2021

BEFORE INSTALLING YOUR WIRQUIN TOILET SEAT:

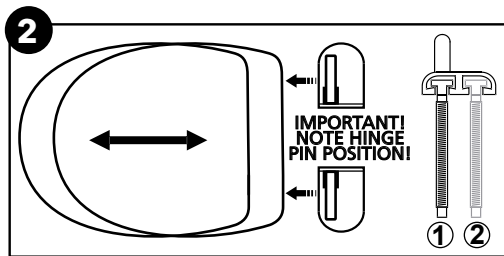
- ▶ Verify the colour and size.
- ▶ Check that the visual surface is free from cracks and surface defects.
- ▶ Ensure that all components are present and in a satisfactory condition.
- ▶ No claims will be entertained after installation.

CARE AND CLEANING OF YOUR WIRQUIN TOILET SEAT:

- ▶ The seat and cover should be cleaned using warm soapy water.
- ▶ Do NOT use aggressive or abrasive cleaners as this may scratch the surface.
- ▶ The hinges should be cleaned using soap or mild detergent.
- ▶ After cleaning, the hinges should be rinsed in clean water and dried.
- ▶ NEVER use bleach, concentrated cleaners or acids as this will cause discolouring and pitting.
- ▶ Do not leave bleach in the toilet bowl with the cover closed because it may cause discolouration of the seat and hinges.
- ▶ The cover of the toilet seat is for decorative purposes only. The lid is not guaranteed to carry weight. **(Do NOT stand or sit on the lid.)**

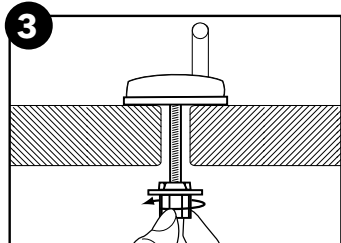


Place the plastic bolt (D) in one of the slots in the hinge body (B) and slide the gasket (C) into the hinge body (B). Push the hinges into the holes in the seat lugs (NOTE: the pins on the hinge must go on the inside, pointing outward) fit the seat by placing the bolts through the holes in the toilet pan.



The seat overhang at the front of the pan can be adjusted.

1) Move the plastic bolts into the alternative slot in the gasket and hinge body. This allows two possible seat positions. The seat can be adjusted sideways to ensure that it is centred. The hinge body may be turned around, with the hinge post offset to the front or the back of the seat, to allow for a 3rd adjustment option.



When the ideal position for the seat has been found, fix in place by adding the nuts on the underside of the pan. Please ensure that the seat is secure before use. Failing to do so could damage or break the hinges.



www.wirquin.co.za

WIRQUIN Manufacturing
1 Hospital Road, Somerset East, Eastern Cape, 5850
Phone: +27 (0) 42 243 6000 - email: enquiries@wirquin.co.za

wirquin